

# Planeo 4049



**11 <sup>3</sup>/<sub>4</sub> in x 3 <sup>1</sup>/<sub>4</sub> in or 300 mm x 80 mm**

Technical datasheet



# Planeo 4049

WHS: Wood hybrid system

# Geolam®

Architectural Eco-Technology



Section tolerances in mm: +/- 2.0 mm or +/- 3/32 in

The outer wpc layer is sanded. The provided dimensions are average thickness (as well for all drawing in that document)

**Fire rating:**

**On request:**

ASTM E-84 class A

Euroclass NF EN 135011 : B, s3-d0

Euroclass NF EN 135011 : A2, s3-d0

NFP 92 -507 : M2 or M1

**Surfaces finish:** Sanded

Other surface textures available on request. Sanding finish and/or shading may vary between runs. WPC thickness may vary in compliance with flame test requirements.

**Profiles fastening and installation:** Planeo boards cannot be cut within the bolts at either board end. Refer to our website [www.geolam.com](http://www.geolam.com)

Technical information may change without warning.

**Standard length:** 9 ft 10 in | 3.0 m

**On order any length from:** 7 ft to 27 ft | 2.15 m to 8.25 m

**Weight:** 3.92 lb/ft | 5.84 kg/m

**Secondary moment Ix (cm<sup>4</sup>):** 164.76

**Secondary moment Iy (cm<sup>4</sup>):** 1331.1

**Section modulus Z+x (cm<sup>3</sup>):** 42.79

**Section modulus Z-x (cm<sup>3</sup>):** 42.79

**Section modulus Z+y (cm<sup>3</sup>):** 89.63

**Section modulus Z-y (cm<sup>3</sup>):** 89.63

**Core in anodized aluminum alloy:** A6063S-T5 Serie 6000

**Coefficient of Thermal Expansion (20-100°C):**

23.4 μm/m/°C

**Modulus of Elasticity:** 68.9 GPa

**Max Tensile Strength:** 186 Mpa

**Carbon Footprint:**

**WPC :** 1.54 kg CO<sub>2</sub>/Kg WPC

**Alu :** 0.87 kg CO<sub>2</sub>/Kg Alu



Teak



Limba



Rosewood



Wenge



Bilinga



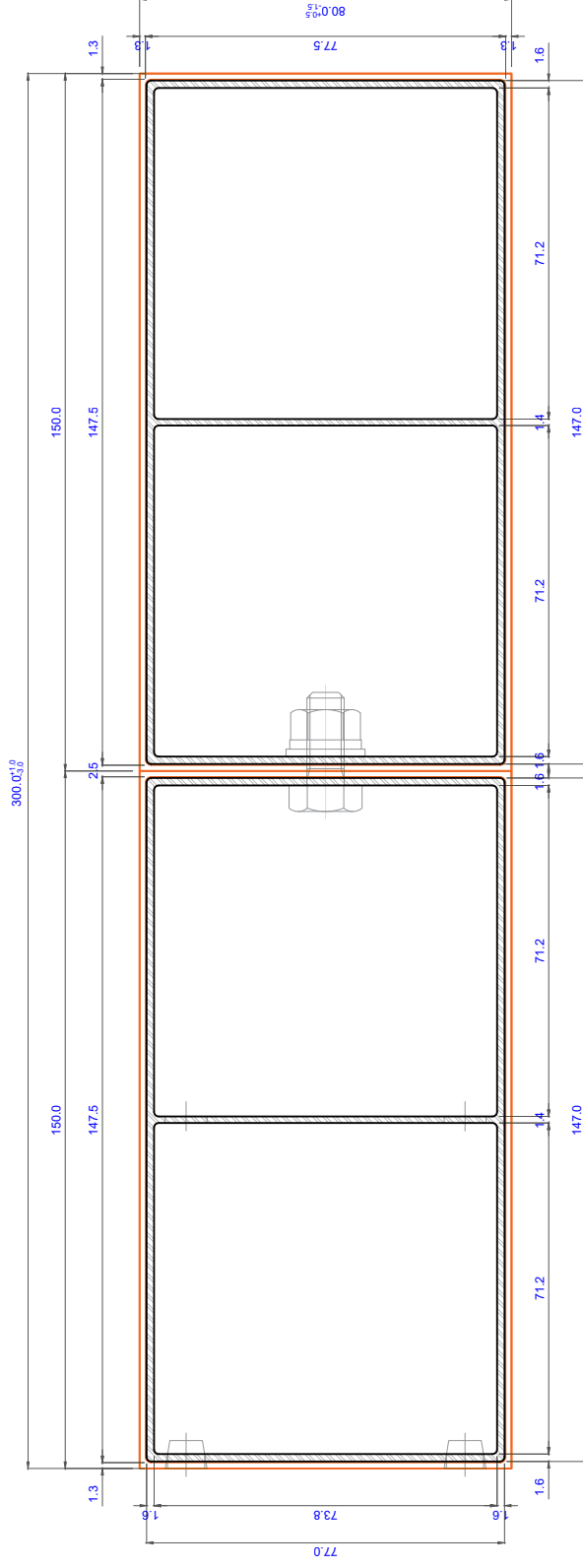
Carbon



Ivory



Any color on request



Technical specifications, dimensions in mm	
Weight (kg/ml)	5.84
Cross section, secondary moment Ix (cm <sup>4</sup> )	164.76
Cross section, secondary moment Iy (cm <sup>4</sup> )	1331.10

Cross section coefficient	
Z+x (cm <sup>3</sup> )	42.79
Z-x (cm <sup>3</sup> )	42.79
Z+y (cm <sup>3</sup> )	89.63
Z-y (cm <sup>3</sup> )	89.63

Wood hybrid system WHS	
<b>Planeo 4049</b>	
Type 1.0	